

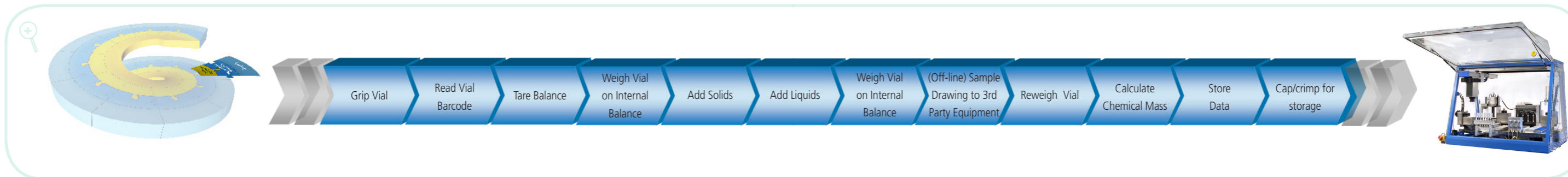
SWEIGHER

from concepts to success

- Automated vial & plate weighing, filling, capping & crimping -



from concepts to success



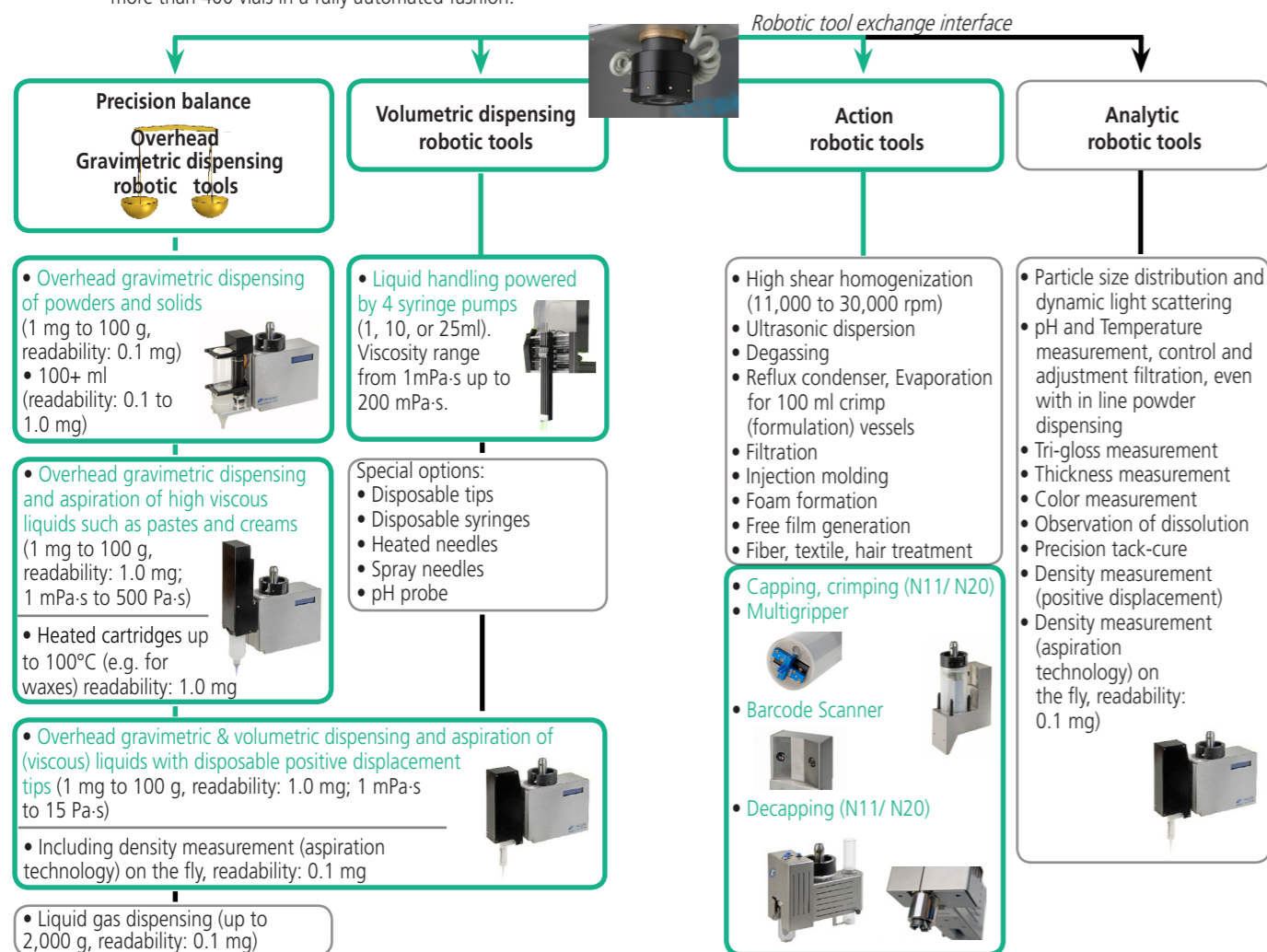
SWEIGHER, a modular robotic platform for automated vial & plate weighing, filling, capping & crimping

SWEIGHER is a software-driven robotic platform which automates the following steps for you: tares each vial; dispenses liquid and solid compounds; caps and crimps the vials; transfers each vial sequentially to the balance; offers optional barcode identification; weighs each vial; acquires and stores data in your database.

- **SWEIGHER** brings paradigm shifting modularity enabling an easy to use workflow task driven software
- Exchangeable robotic tools
- Unrivaled gravimetric dispensing technology **directly immersing into the target** including an **anti-drip system** which avoids cross contamination!
- Designed to be used with any type of containers such as vials, MTP microplates, bottles, tubes, reactor blocks etc.
- A large choice of hardware and software tools allow fine tuned adaptation to your workflow
- (also available!) Simultaneous double check of every dispense with **two independent analytical balances**

Unrivaled gravimetric dispensing technology & exchangeable robotic tools

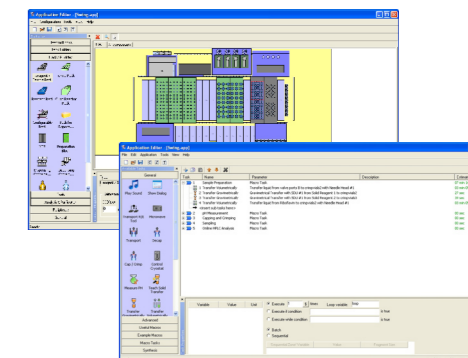
More than 30 features can be delivered with Chemspeed's unique robotic tool exchange technology, including unrivaled overhead gravimetric dispensing tools. The integration of a weighing module eliminates tedious manual filling and weighing, and allows to process more than 400 vials in a fully automated fashion.



Powered by **AutoSuite SWEIGHER** user interface

AutoSuite SWEIGHER is an intuitive user interface software which allows easy workflow orientated programming. Many features such as the gravimetric dispensing steps are automatically calibrated, eliminating tedious optimisation steps.

- The **AutoTeaching** tool simplifies the use of the powder (as well for viscous liquids, waxes, etc.) dispensing task, eliminating the need for manual optimization
- Easy programming: drag-and-drop workflow steps
- Barcode tracking
- Smooth integration into Chemspeed's workflow management software (see reverse)
- AutoSuite Application Programming Interface (API): for 3rd party software and hardware integration, and standard integration of Spotfire, JMP, VirtualLab etc.



Modular deck

Chemspeed is able to dispense any type of compound into any type of container (vial, microtiter plates, bottles, reactors, formulation vessels etc.) (Please refer to other Workflow Brochures)

The unique benefits of the **SWEIGHER** are:

- Compound addition, vial capping & crimping and weighing on a single platform (any crimp-top vial for GC/ HPLC autosamplers, microwave synthesizers, etc.)
- Tight hood for sensitive reagent handling under fully inert atmosphere
- Tight, reproducible vial sealing
- Immediate sealing of vial after filling
- Customization of rack/ tray for maximum compatibility

Managing the storage of large compound libraries of sample vials is a very time consuming task for laboratories. The **SWEIGHER** robotic platform offers sample weighing automation, and vials are ready to be transferred to your autosampler, microwave synthesizer or compound storage system.



SWEIGHER integrated balance weighing module



Gravimetric solid compound addition with overhead balance



Gravimetric and volumetric liquid compound addition



Vial transfer to balance



Vial capping and crimping



Accessories

All tools and accessories of Chemspeed's Swing, Swave, Synthesizer SLT II, AutoPlant, Formax, Applicator and Investigator are fully compatible with the **SWEIGHER** robotic platform and vice versa (see the high output product development spiral below). Please refer to Chemspeed's other workflow brochures for modularity examples.

Many upgrade options such as:

- High performance reactor array technology
- Analytical interfaces
- Automated tool heads (up to 36)
- Shakable and heatable racks



High output product development spiral

Chemspeed's AutoSuite workflow management software integrates with:

1. All of Chemspeed's robotic platforms such as

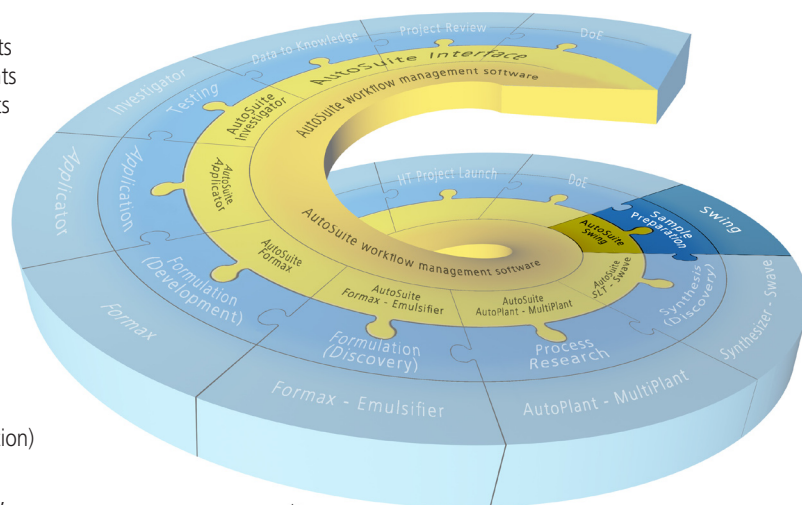
- Sample preparation workflows/ instruments
- Parallel array synthesis workflows/ instruments
- Parallel process research workflows/ instruments
- High output formulation workflows/ instruments
- High output application workflows/ instruments
- High output testing workflows/ instruments

2. Third party instruments

Chemspeed integrates a vast number of 3rd party components (e.g. in robotic tools). Please refer to Chemspeed's Workflow Portfolio brochure and/ or contact your Chemspeed's representative.

3. Third party software such as

- SpotFire (premium data visualization and selection)
- JMP (design of experiments - DoE)
- VirtualLab (lab journal, workflow management, instrument control)
- and many other laboratory software through industry standard languages (SQL, .net, C#, etc)



Hardware - Software - Logistics
Chemspeed Technologies offers all.

