

Disintegration
Automatic

DT 50

The bathless DT50 revolutionizes disintegration testing. Easy to operate with automatic test start, induction heating system, and 100% unattended end-point detection.

SOTAX



Automatic Disintegration Tester



DT50 — Bathless. Better. Beautiful.



sotax.com/DT50

User-friendly touch screen operation

Fully compliant wireless self-centering baskets

Automatic test start when target temperature has been reached

100 % unattended end-point detection for each tablet

Continuous monitoring of medium temperature

Bathless induction heating for very short heating times



Master Station

Modular additional stations



Client Station

100% unattended end-point detection

Bathless

Automatic test start

Permanent medium temperature monitoring

Electronic data management

Preheating of media for seamless pH-changes



Media Preparation Station

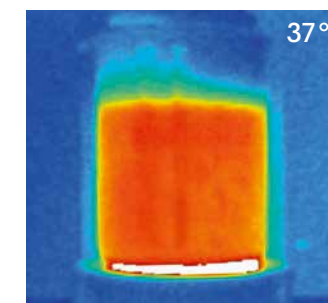
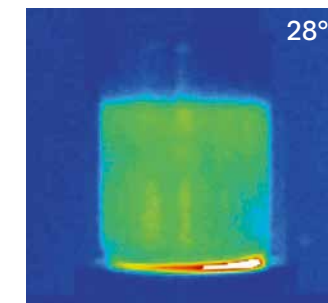
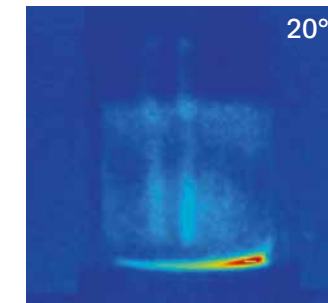


Innovative design.



Temperature under control.

Fast bathless induction heating reduces unproductive waiting times to an absolute minimum and ensures very homogeneous temperature distribution inside the beaker. Medium temperature is permanently monitored. Once the target temperature has been reached, the test starts automatically – and continuous temperature readings are taken for reporting purposes.



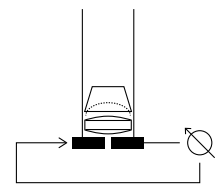



End-point detection. 100% unattended.

How does it work?

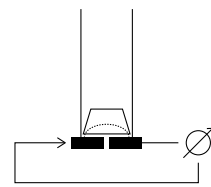
The unique split-sieve technology automatically detects whether a tablet has completely disintegrated. Each disc features pins, that connect the opposite outer sides. As soon as a test object has completely disintegrated, the opposing pins bridge the split sieve – and the time since test start is recorded.


Tablet intact



 Split sieve parts do not connect

Tablet disintegrated



 Contact through pins in disc





Flexible configurations.

Extend your DT50 to a disintegration system with up to four independent testing stations – plus one Media Preparation Station. Retrofit is simple with a standard Ethernet connection. The modular design ensures that the system layout remains flexible and can be changed anytime if needed.

Easy handling.

From test setup to cleaning – the DT50 has been optimized for fast and ergonomic handling. The wireless baskets with self-centering magnetic coupling can be exchanged within seconds. Upon completion of each test, a report with recorded disintegration times per tablet, statistics, and temperature protocol is automatically printed.

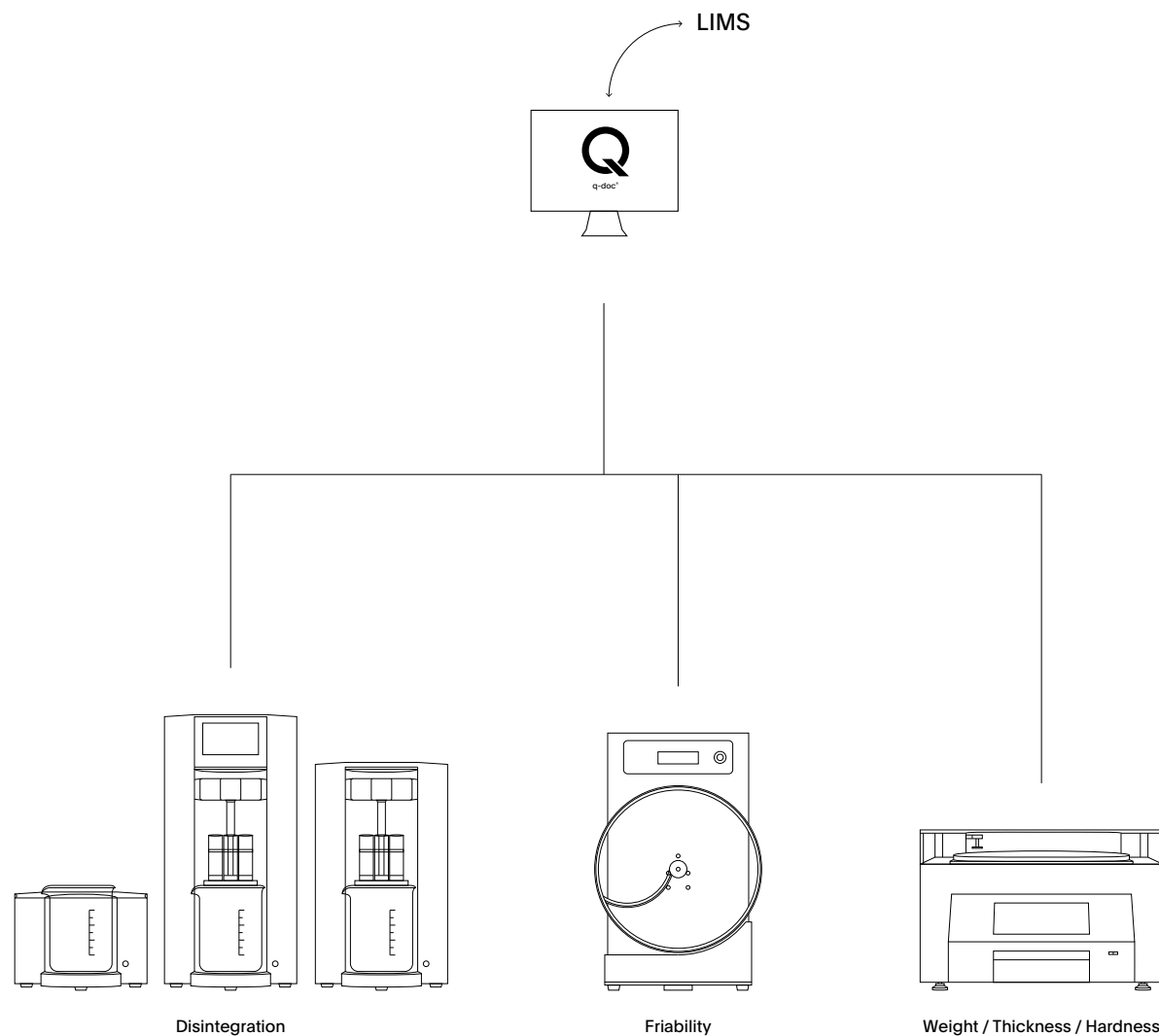


Maximum Configuration with 1× Master Station, 3× Client Station, and 1× Media Preparation Station

Manage your data.

The DT50 integrates seamlessly with q-doc® data management software. Each station is controlled individually. To make testing of large tablets and re-tests according to USP <701> as easy as possible, results from multiple stations can be combined into a single test protocol. For efficient batch analysis, q-doc® automatically consolidates all testing data into one clearly structured batch report.

Example:
q-doc® network with DT50



DT50 Technical Specifications

Stations		1 – 4 independent test stations
End-point detection	Technology	Split sieves, discs with detection pins
	Automatic detection mode, per sample	●
	Manual detection mode, per sample	●
	Manual detection mode, all samples	●
Basket types (Apparatus A)	6-tube basket, 10 mesh, automatic	○
	6-tube basket, 10 mesh, manual	○
Basket types (Apparatus B)	3-tube basket, 10 mesh, automatic	○
	3-tube basket, 10 mesh, manual	○
Other basket types	6-tube basket, 18 mesh, automatic	○
	6-tube basket, 31 mesh, automatic	○
	Single tube basket, 10 mesh, manual	○
Accessories	Capsules support, for 6-tube basket	○
	Disc remover tool	○
Strokes per minute	Frequency (setting according to USP / Ph. Eur.)	30
	Frequency (setting according to JP)	31
	Accuracy	±1
Stroke height	Height	55 mm
	Accuracy	± 2 mm
Temperature	Range	25 – 40 °C, programmable
	Temperature control	IR sensor, per station
	Measuring accuracy	± 0.2 °C
User interface*	Program capacity	100 products / methods
	User access restriction	●
Printer*	PostScript® 3 (PS3)	Ethernet
	Epson® 40col.	RS-232 serial
Data Management*	q-doc® software, with full control of stations	○
CE Conformity	The DT50 fully complies with all CE and EMC equipment guidelines relative to mechanical and electrical safety and electromagnetic compatibility.	

		Master	Client	Media Preparation
Max. # stations	(per system)	1	3	1
Interfaces	Ethernet	●	●	–
	RS-232 serial	●	–	●
Power supply	100 – 240 V / 50 – 60 Hz	●	●	●
Power consumption		50 Watt / 3A	50 Watt / 3A	50 Watt / 3A
Weight	(without packaging)	8 kg (18 lbs)	7 kg (16 lbs)	3 kg (7 lbs)
Dimensions	Width	225 mm (8.9 inch)	225 mm (8.9 inch)	225 mm (8.9 inch)
	Depth	200 mm (7.9 inch)	200 mm (7.9 inch)	200 mm (7.9 inch)
	Height	460 mm (18.1 inch)	380 mm (14.9 inch)	155 mm (6.1 inch)

* applies to DT50 system (Client station control via Master station)

● included / required
○ optional

Technical specifications are subject to change without prior notice. Products illustrated in this brochure may include options or modifications not fitted as standard. No liability for errors and omissions.

